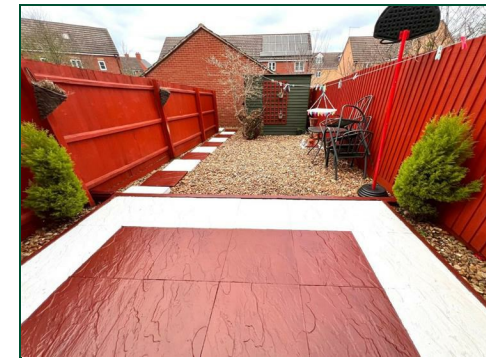




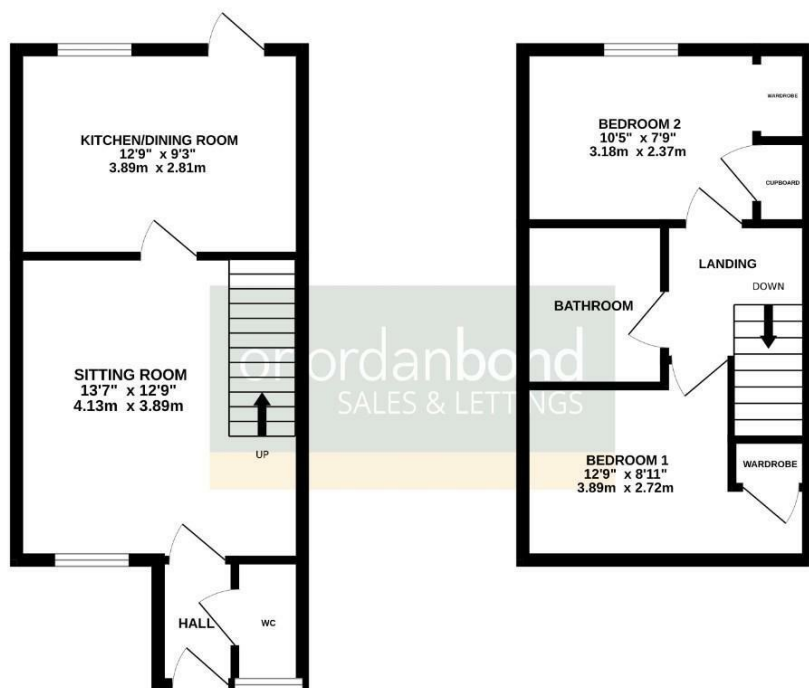
Kent Road
St. Crispin, Northampton

oriordanbond
SALES & LETTINGS



GROUND FLOOR
326 sq.ft. (30.3 sq.m.) approx.

1ST FLOOR
290 sq.ft. (27.0 sq.m.) approx.



TOTAL FLOOR AREA : 617 sq.ft. (57.3 sq.m.) approx.
Whilst every attempt has been made to ensure the accuracy of the floorplan contained here, measurements of doors, windows, rooms and any other items are approximate and no responsibility is taken for any error, omission or mis-statement. This plan is for illustrative purposes only and should be used as such by any prospective purchaser. The services, systems and appliances shown have not been tested and no guarantee as to their operability or efficiency can be given.
Made with Metreapp 6/2/25

Kent Road

St. Crispin

NN5 4XB

OFFERS OVER £225,000

A must see for first time buyers is this well presented two bedroom terraced house. The property is located within the popular area of St. Crispin, set within close proximity to St. Crispin's retail village, along with local schools and parks.

The accommodation comprises entrance hall, sitting room, kitchen/dining room, cloakroom/WC, two first floor double bedrooms and a family bathroom. Outside, to the rear of the property is a low maintenance garden with gate leading to a gated parking area with one allocated parking space. Further benefits include gas radiator heating and uPVC double glazing (B/617/M)

Additional information

- Council Tax Band: B
- Energy Efficiency Rating: C

Viewing

Viewing strictly by appointment – details below

Disclaimer

O'Riordan Bond Estate Agents Limited has not tested apparatus, equipment, fittings or services and so cannot verify they are in working order. The buyer is advised to obtain verification from their solicitor or surveyor.

O'Riordan Bond Duston Sales

01604 589007

duston@oriordanbond.co.uk

